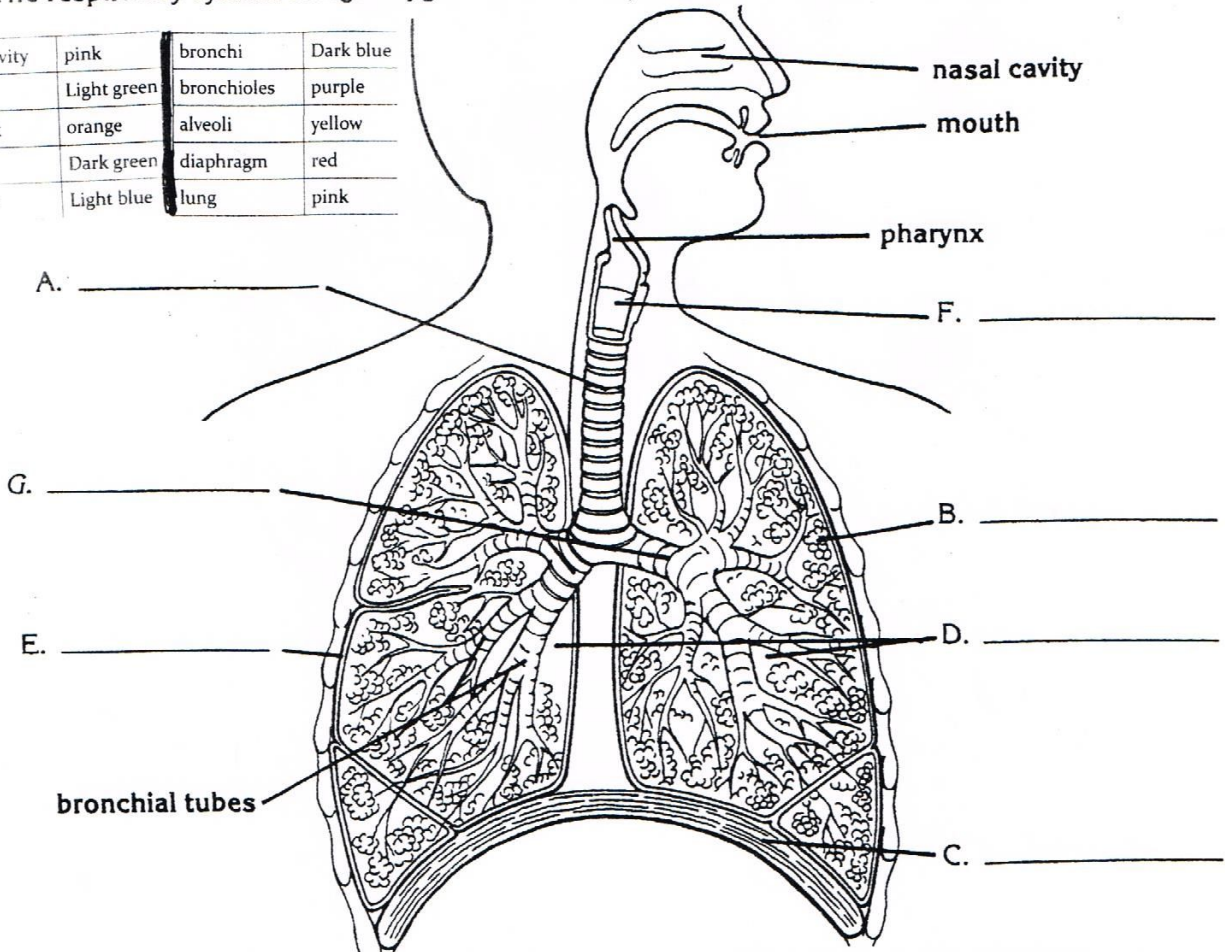


## The Respiratory System

The respiratory system brings oxygen into the body and removes carbon dioxide and other gases.

Nasal cavity	pink	bronchi	Dark blue
mouth	Light green	bronchioles	purple
pharynx	orange	alveoli	yellow
larynx	Dark green	diaphragm	red
trachea	Light blue	lung	pink



1. Study the diagram to correctly identify these parts of the respiratory system. Then use each answer to correctly label the diagram.

- A. the tube that connects the throat and the bronchial tubes \_\_\_\_\_
- B. the grape-like clusters of air sacs within the lungs \_\_\_\_\_
- C. the large band of muscle that controls the size of the chest cavity \_\_\_\_\_
- D. the two large lightweight respiratory organs of the body \_\_\_\_\_
- E. the outer membrane which covers the lungs \_\_\_\_\_
- F. the part of the respiratory system that helps us speak \_\_\_\_\_
- G. the two branches of the windpipe \_\_\_\_\_

2. Write **True** if the statement is true. Write **False** if the statement is false.

\_\_\_\_\_ The teeth are an important part of the respiratory system.