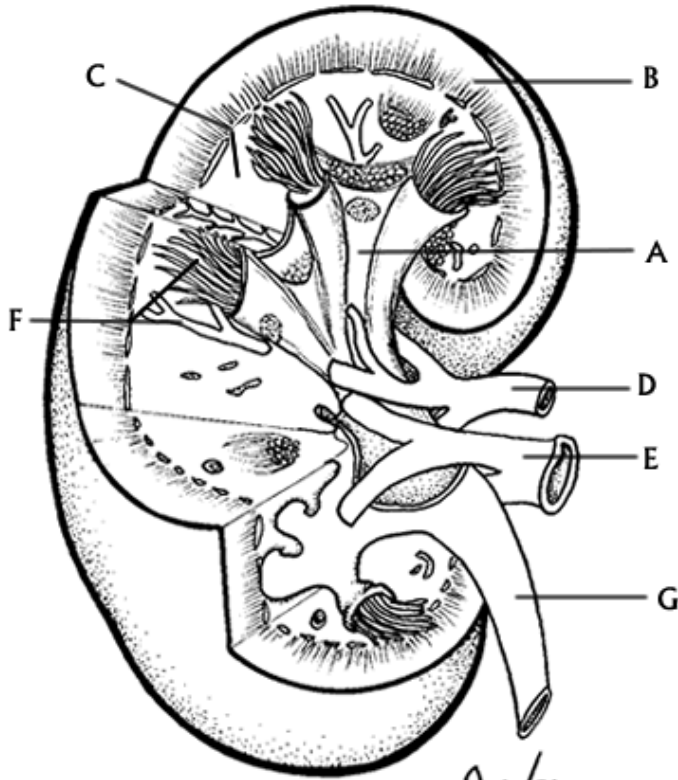


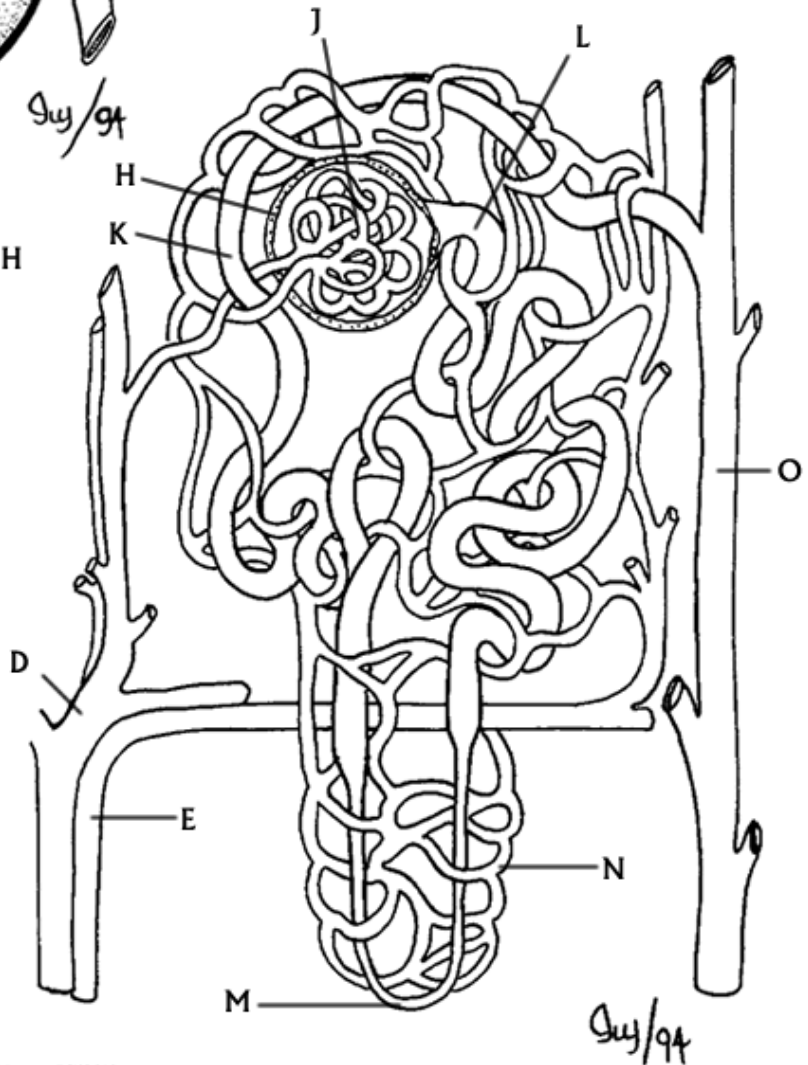
# STRUCTURE OF THE NEPHRON



RENAL PELVIS<sub>A</sub>  
 CORTEX<sub>B</sub>  
 MEDULLA<sub>C</sub>  
 RENAL ARTERY<sub>D</sub>  
 RENAL VEIN<sub>E</sub>  
 NEPHRON<sub>F</sub>  
 URETER<sub>G</sub>

L.Mingston, ©BIOCIDAC

BOWMAN'S CAPSULE<sub>H</sub>  
 GLOMERULUS,  
 DISTAL TUBULE<sub>K</sub>  
 PROXIMAL TUBULE<sub>L</sub>  
 LOOP OF HENLE<sub>M</sub>  
 CAPILLARIES<sub>N</sub>  
 COLLECTING DUCT<sub>O</sub>



L.Mingston, ©BIOCIDAC