

# Animal Cell Coloring

Name \_\_\_\_\_

I. Directions: Color each part of the cell its designated color.

Cell Membrane(light brown)

Cytoplasm (light yellow)

Nucleoplasm (pink)

Nuclear Membrane(dark brown)

Nucleolus (black)

Golgi Apparatus (pink)

Flagella (red/blue striped)

Rough Endoplasmic Reticulum (dark blue)

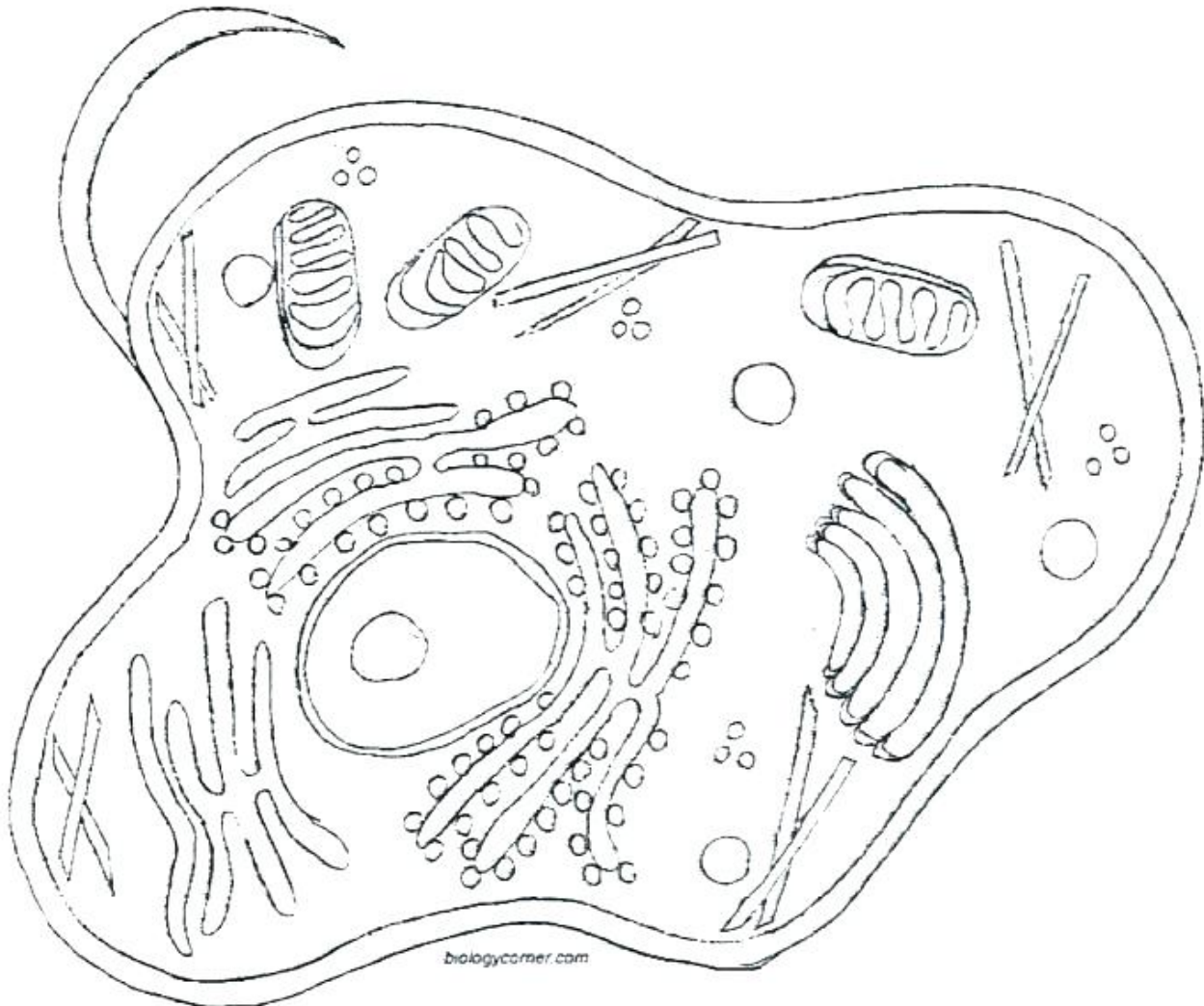
Smooth Endoplasmic Reticulum( light blue)

Mitochondria (orange)

Lysosome (purple)

Microtubules (dark green)

Ribosome (red)



ii. Briefly describe the function of the organelle.

1. Cell membrane \_\_\_\_\_

2. Endoplasmic Reticulum \_\_\_\_\_

3. Ribosome \_\_\_\_\_

4. Golgi Apparatus \_\_\_\_\_

5. Lysosome \_\_\_\_\_

6. Microtubule \_\_\_\_\_