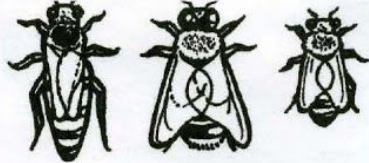


# Inside the Hive

The honey bees' home is made of the "comb" - the hexagonal cells honey bees construct out of beeswax. This is where the baby bees (called "brood") are raised, food is made and stored, and where the bees communicate with each other.  
 Can you identify the parts of the comb inside the hive and the three different kinds of bees that live there?



### Queen

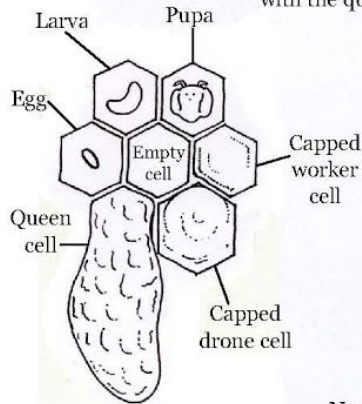
The mother of the beehive, the queen can lay up to 2,000 eggs per day! There is only one queen in a bee colony.

### Drone

The drones are the male bees in the hive, and account for about 10% of the population. The drone's job is mating with the queen.

### Worker

The worker bees are all female, and have many jobs which change depending on the bee's age.



Honey bees go through four stages of development in their cells: egg, larva, pupa, and adult. Once the bee is a pupa, other bees cap the cell with wax until the bee has become an adult. The worker bee's cell is the smallest, the drone's cell is slightly bigger, and the queen's cell is the largest.

A honey bee's food comes from flowers: pollen for protein, and honey which is made in the cells from nectar and then capped with wax.

