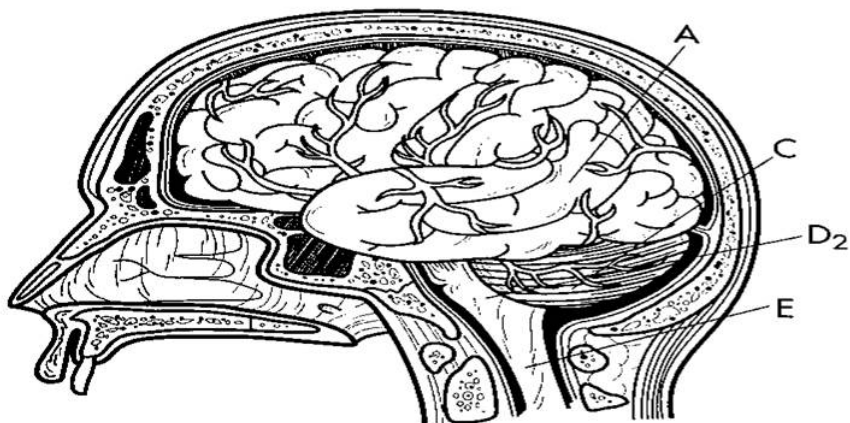
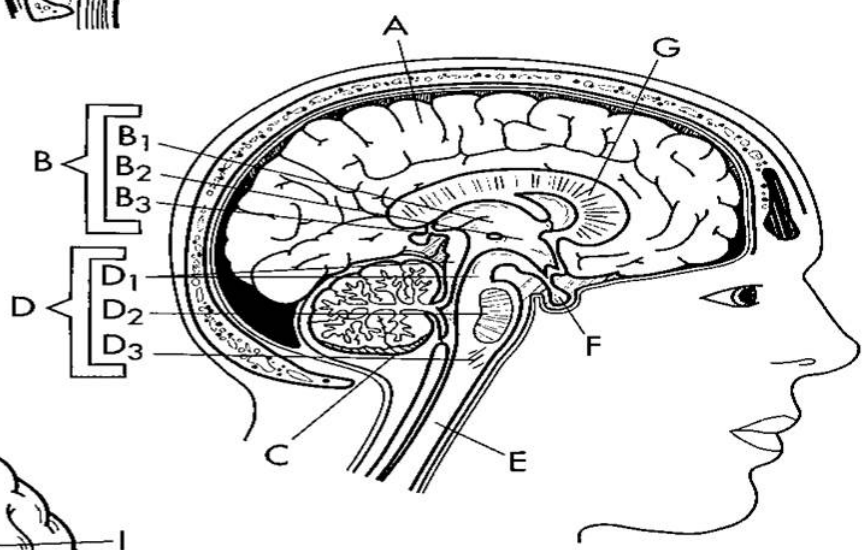


OVERVIEW OF THE BRAIN



- Cerebrum A ○
- Diencephalon B ○
- Thalamus B₁ ○
- Hypothalamus B₂ ○
- Epithalamus B₃ ○
- Cerebellum C ○
- Brain stem D ○
- Midbrain D₁ ○
- Pons D₂ ○



- Medulla oblongata D₃ ○
- Spinal cord E ○
- Pituitary gland F ○
- Corpus callosum G ○
- Olfactory bulbs H ○
- Cranial nerves I ○

