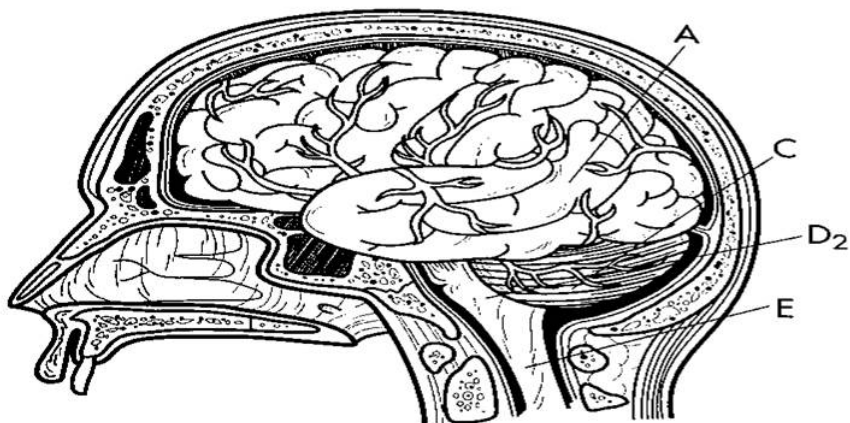
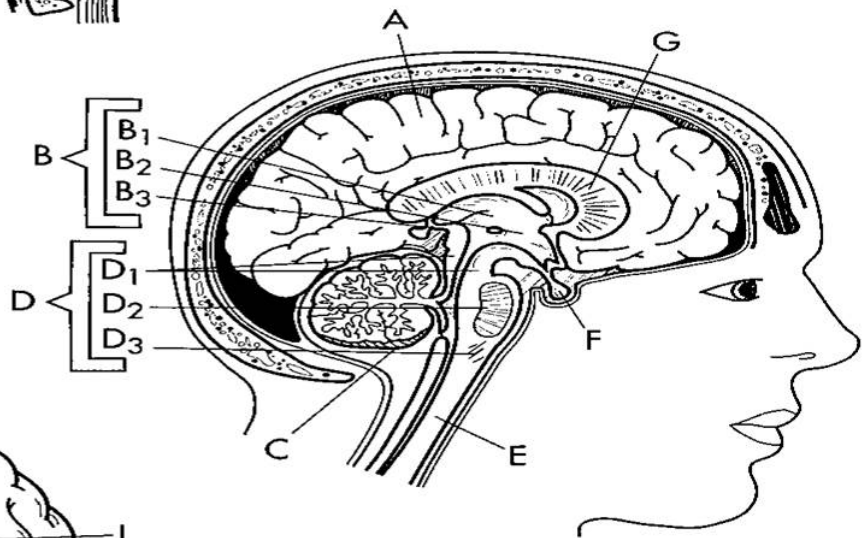


OVERVIEW OF THE BRAIN



- Cerebrum A
- Diencephalon B
- Thalamus B₁
- Hypothalamus B₂
- Epithalamus B₃
- Cerebellum C
- Brain stem D
- Midbrain D₁
- Pons D₂



- Medulla oblongata D₃
- Spinal cord E
- Pituitary gland F
- Corpus callosum G
- Olfactory bulbs H
- Cranial nerves I

