

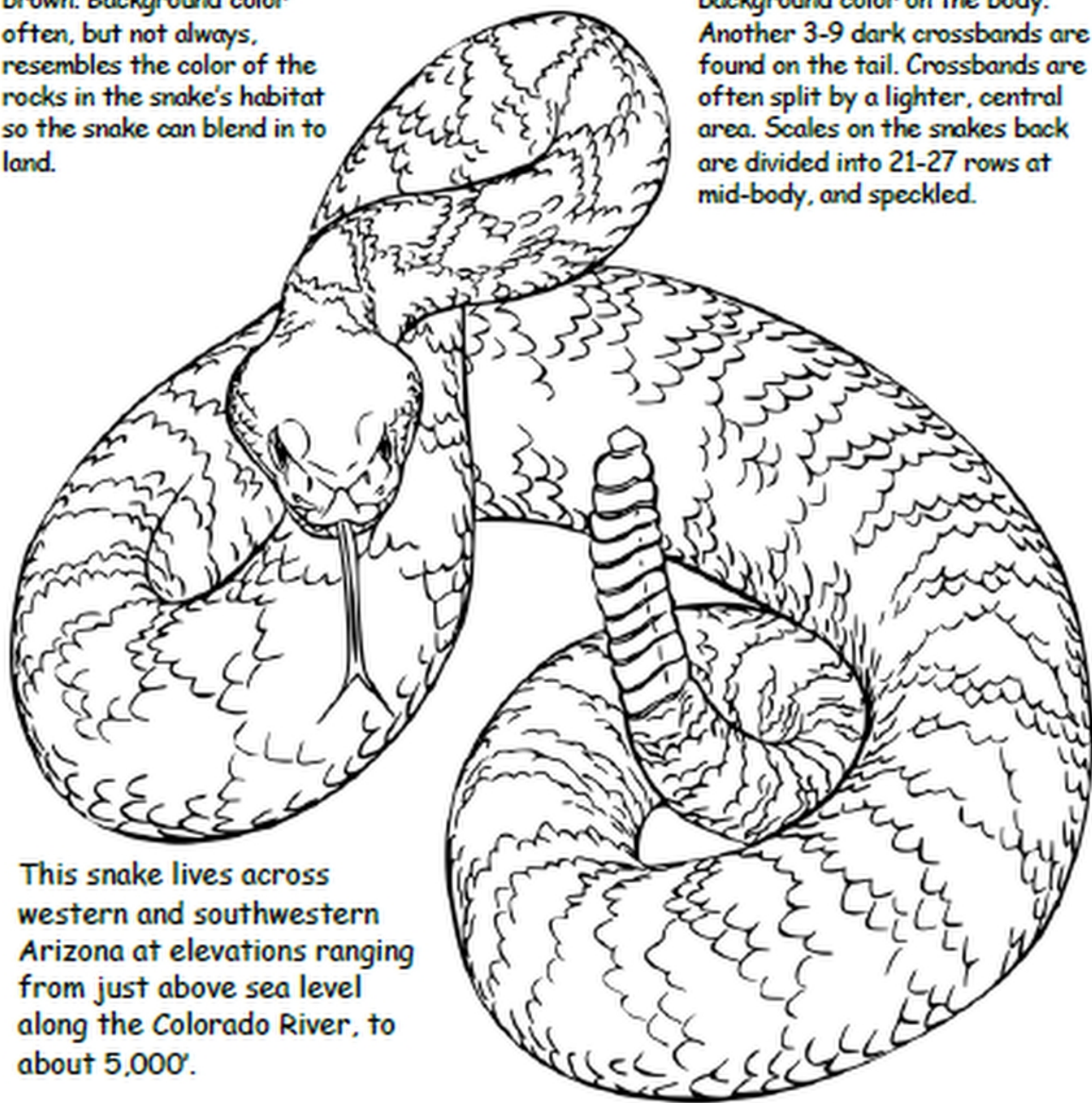
Name _____

<http://tyricpower.net/>

Coloring Page

The background color is rusty tan or dull pinkish-brown. Background color often, but not always, resembles the color of the rocks in the snake's habitat so the snake can blend in to land.

From 23 to 46 dark crossbands, which often narrow, overlay the background color on the body. Another 3-9 dark crossbands are found on the tail. Crossbands are often split by a lighter, central area. Scales on the snakes back are divided into 21-27 rows at mid-body, and speckled.



This snake lives across western and southwestern Arizona at elevations ranging from just above sea level along the Colorado River, to about 5,000'.

Southwestern Speckled Rattlesnake

(Crotalus mitchellii pyrrhus)