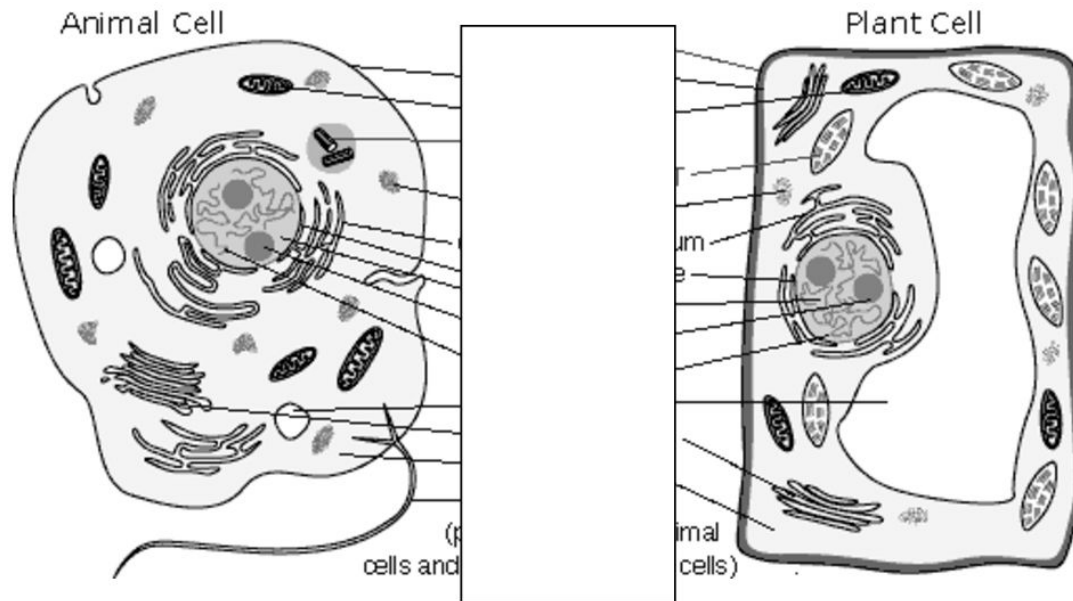


## Animal Cell Coloring

Name \_\_\_\_\_

Directions: Color each diagram according to the chart below.



Color the cell membrane blue.

Color the cell wall red.

Color chloroplasts green.

Color mitochondria pink.

Color the nucleus purple.

Color the endoplasmic reticulum orange.

Color the vacuoles yellow.

Name two organelles you did not color. \_\_\_\_\_

**The fluid mosaic model:** Label the following parts of a cell's membrane.

a. carrier protein (enzyme)

b. phospholipids

c. carbohydrate marker

