

Name \_\_\_\_\_

## Animal Cell Coloring

Cell Membrane (brown) ☐

Cytoplasm (blue) ☐

Nuclear Membrane (purple) ☐

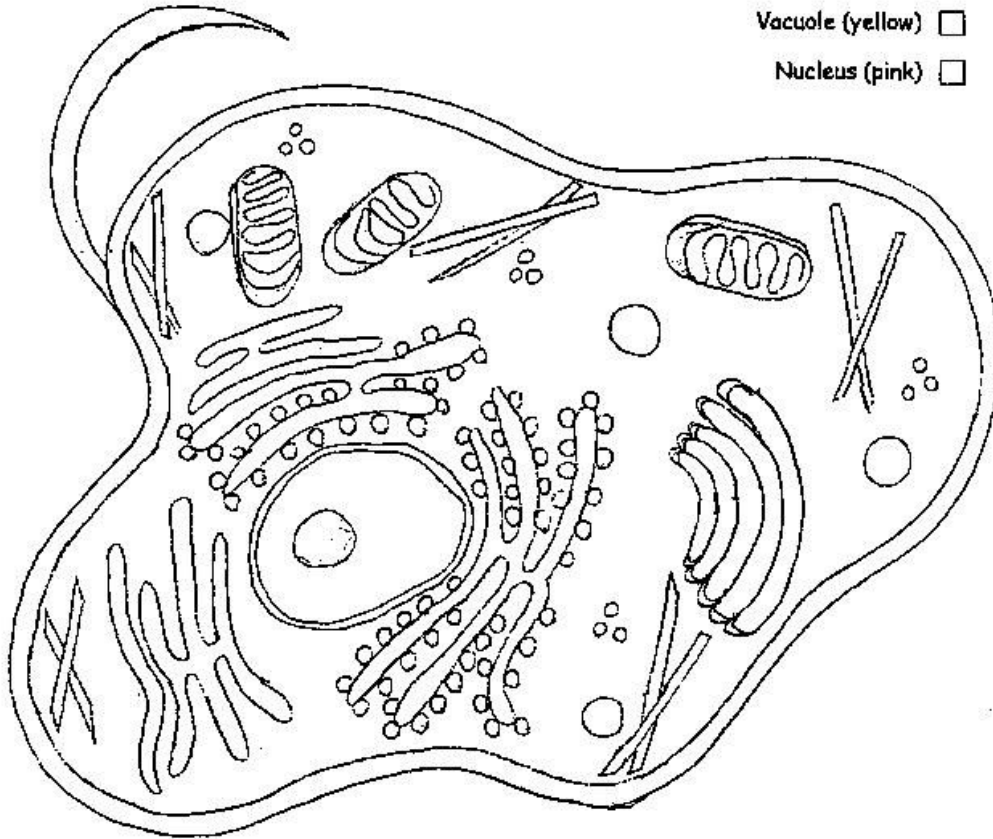
Ribosome (red) ☐

Endoplasmic Reticulum (green) ☐

Mitochondria (orange) ☐

Vacuole (yellow) ☐

Nucleus (pink) ☐



Briefly describe the function of the cell parts.

1. Cell Membrane \_\_\_\_\_

2. Endoplasmic Reticulum \_\_\_\_\_

3. Ribosome \_\_\_\_\_

4. Mitochondria \_\_\_\_\_

5. Nucleus \_\_\_\_\_